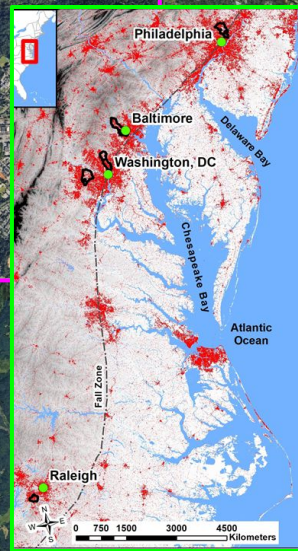
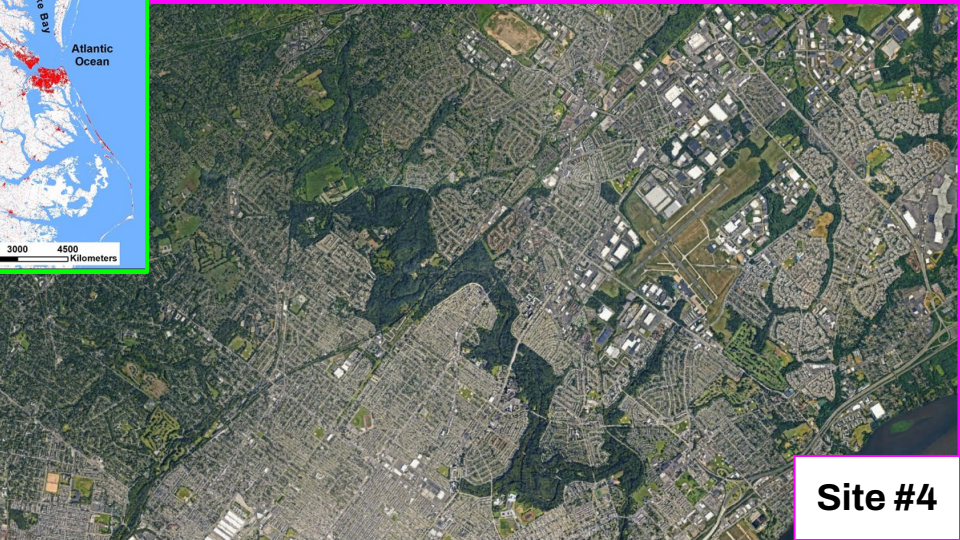
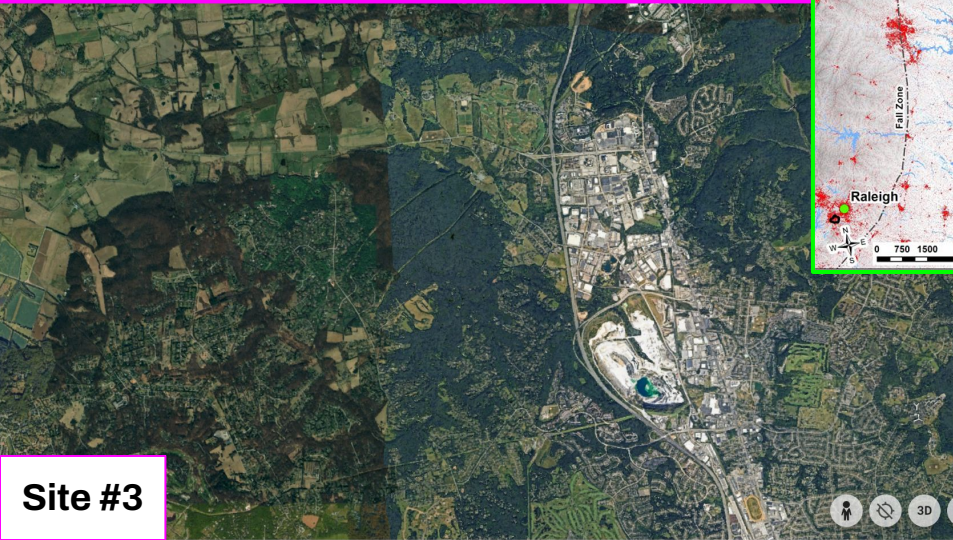


Stream Chemistry Across the Fall Zone

**Comparing the impacts of human activities
on the Critical Zone across different sites.**





Site #1



Site #2

How would you rank the level of urbanization or human development of the four sites shown here?



Site #3



Site #4



Site #1



Site #2

What do you see in the images that allows you to determine if a site is more developed or urbanized?



Site #3



Site #4



Site #1

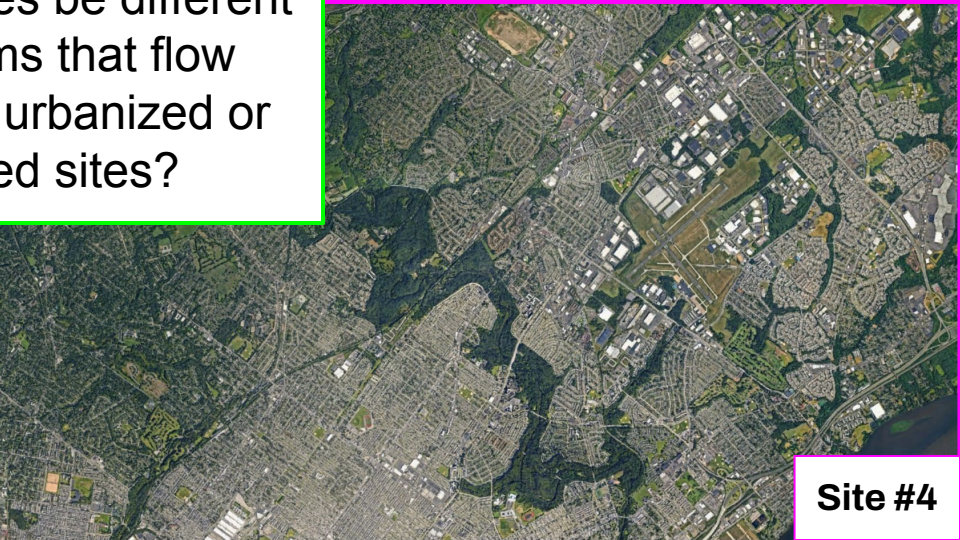


Site #2

How might water quality in streams that flow through more urbanized or developed sites be different from streams that flow through less urbanized or developed sites?



Site #3



Site #4



Site #1

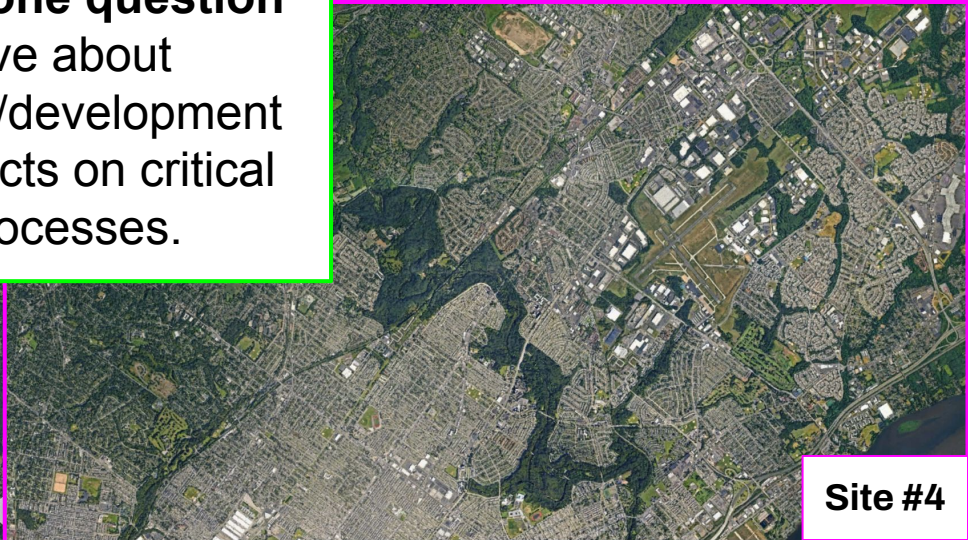


Site #2

Record **one question** you have about the relationship between urbanization/development and water quality, and **one question** you have about urbanization/development and its impacts on critical zone processes.

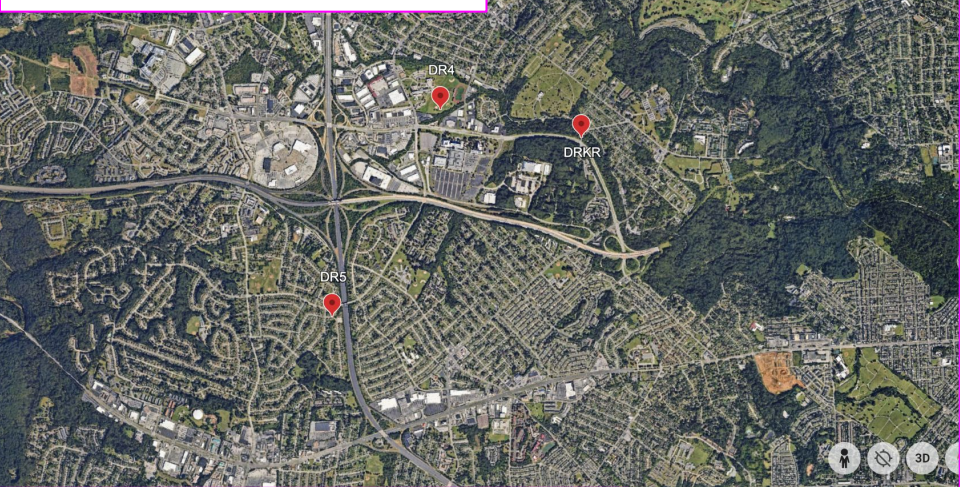


Site #3

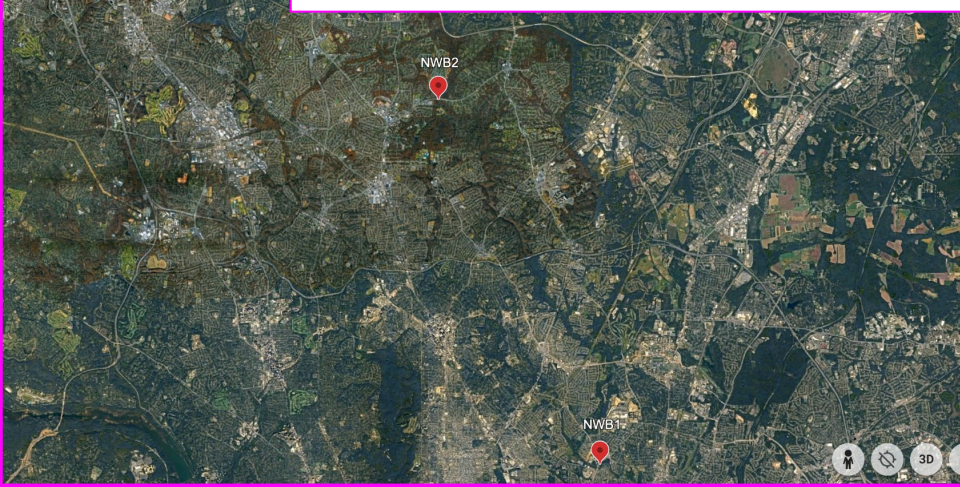


Site #4

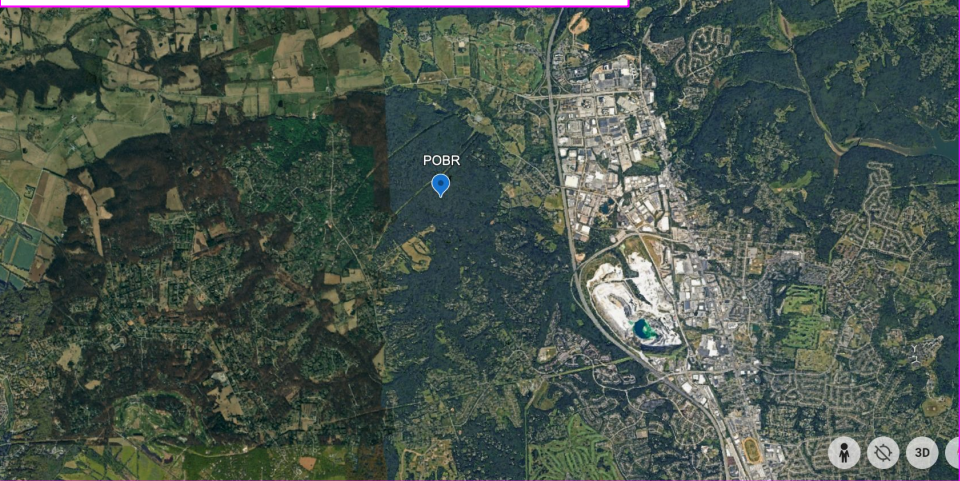
Dead Run (DRKR, DR4, DR5)



NW Branch Anacostia (NWB1, NWB2)



Pond Branch (POBR - reference site)



Pennypack (PPRH, PPI)

