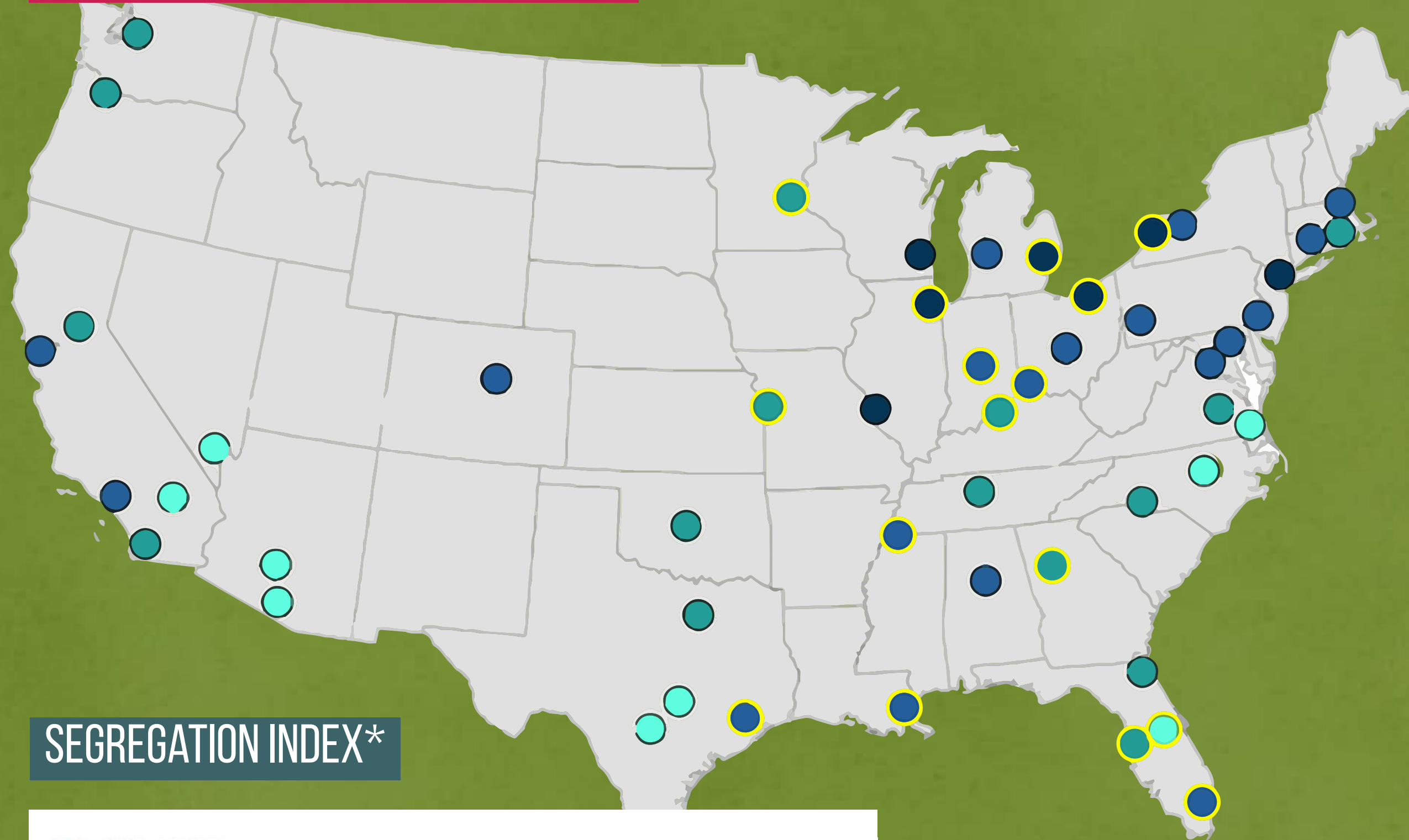


SEGREGATION PATTERNS IN US

BY RACIAL CATEGORY



SEGREGATION INDEX*

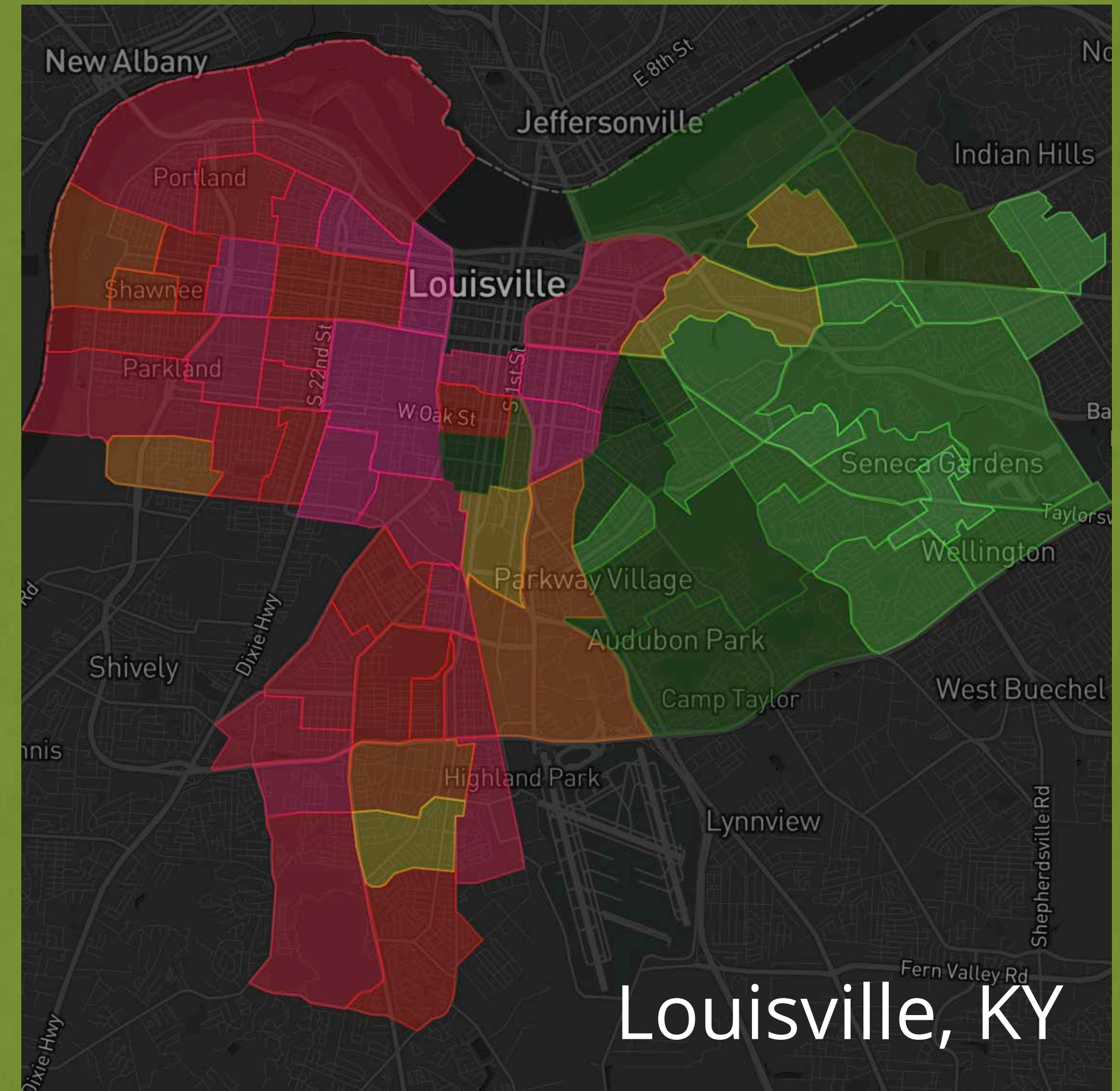
- 70-100
- 60-69
- 50-59
- Below 50
- Lower segregation by 5 or more points since 2000

*The percentage of Blacks who would have to relocate to be fully integrated with whites

SOURCE: BROOKINGS INSTITUTION/WILLIAM FREY

BY CLASS

← more socially vulnerable

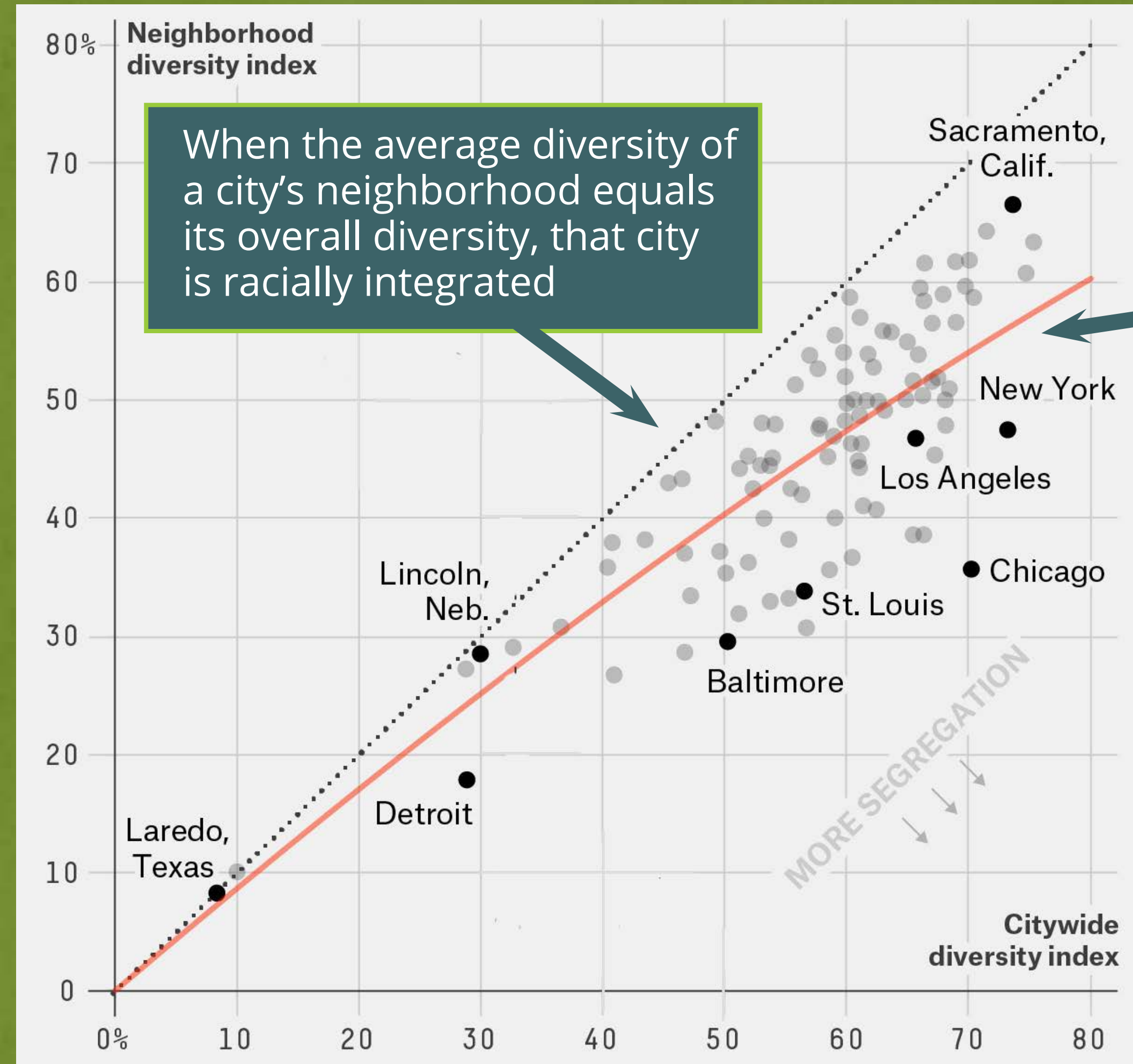


Louisville, KY

SOURCE: UNIVERSITY OF RICHMOND/NOT EVEN PAST

CITIES & NEIGHBORHOODS: WHAT PERCENTAGE BELONGS TO A DIFFERENT RACIALIZED GROUP?

neighborhood diversity



citywide diversity

SOURCE: FIVETHIRTYEIGHT

REDLINING IN LOUISVILLE, KY

today's value
\$129,500



WHITES ONLY



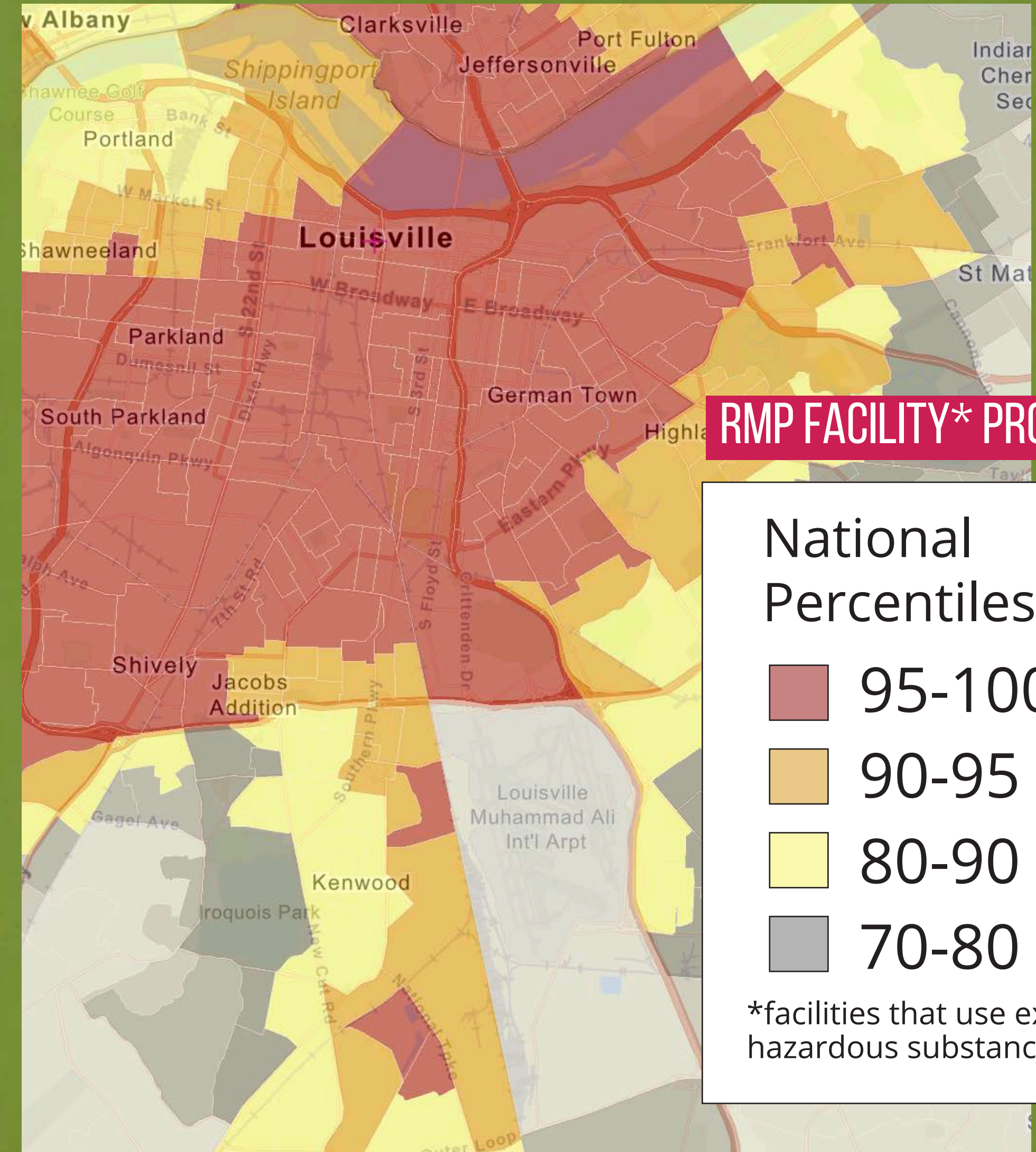
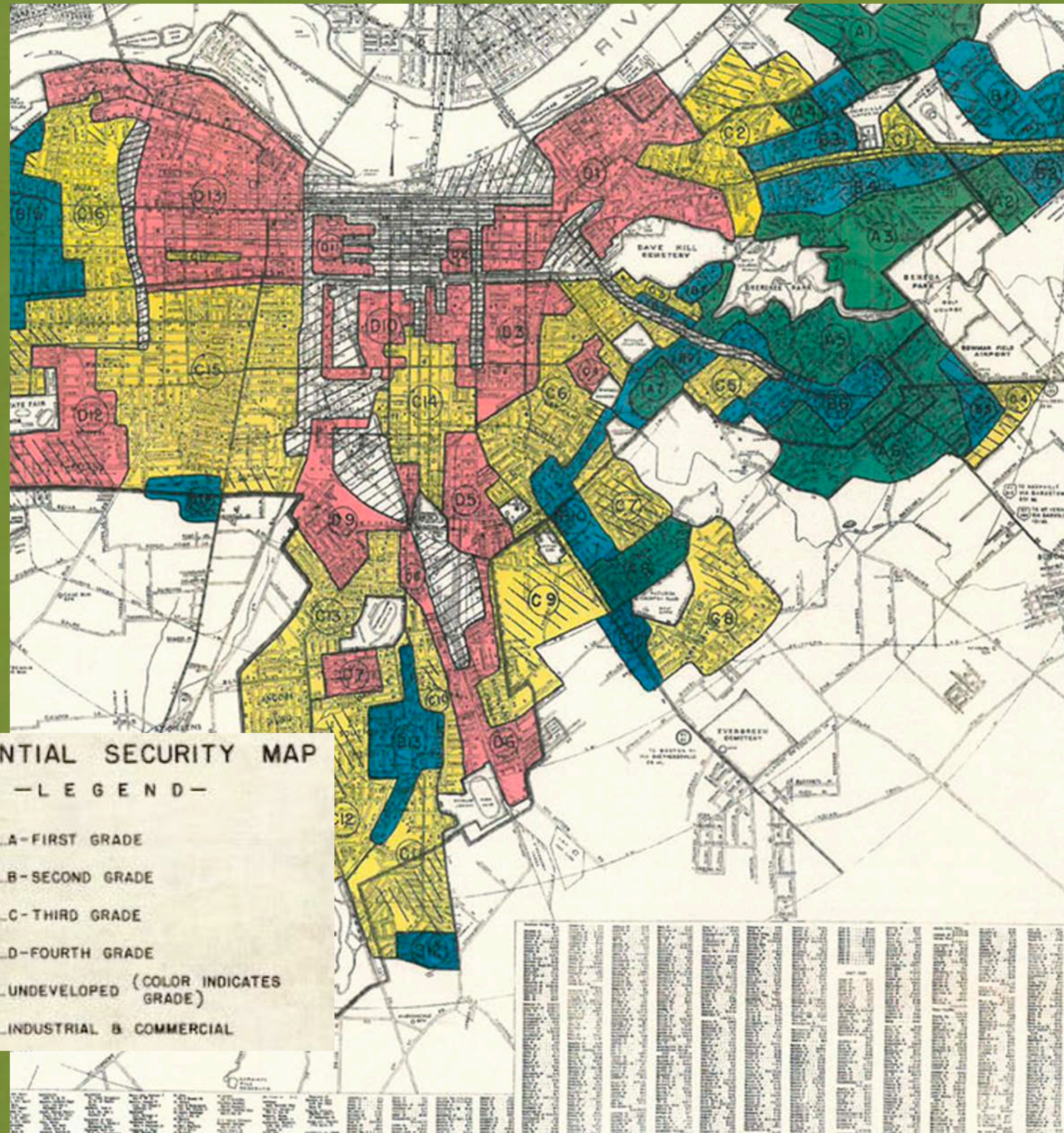
today's value
\$406,800

SECTION 5

THE COURIER-JOURNAL, LOUISVILLE, SUNDAY MORNING, MAY 14, 1950.

Neighbors Buy House To Keep It From Negroes

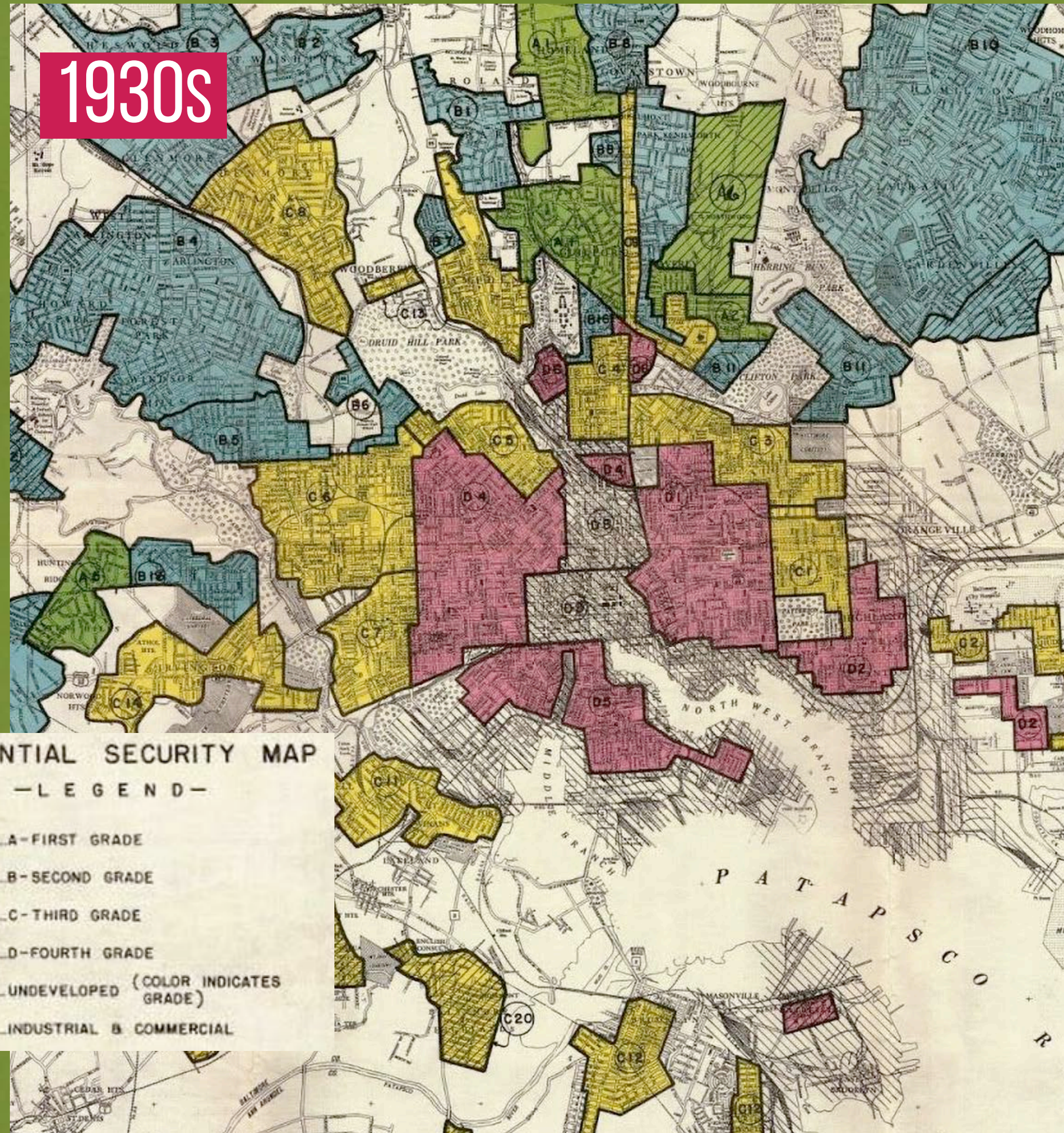
FROM REDLINING TO CONTEMPORARY HAZARDS



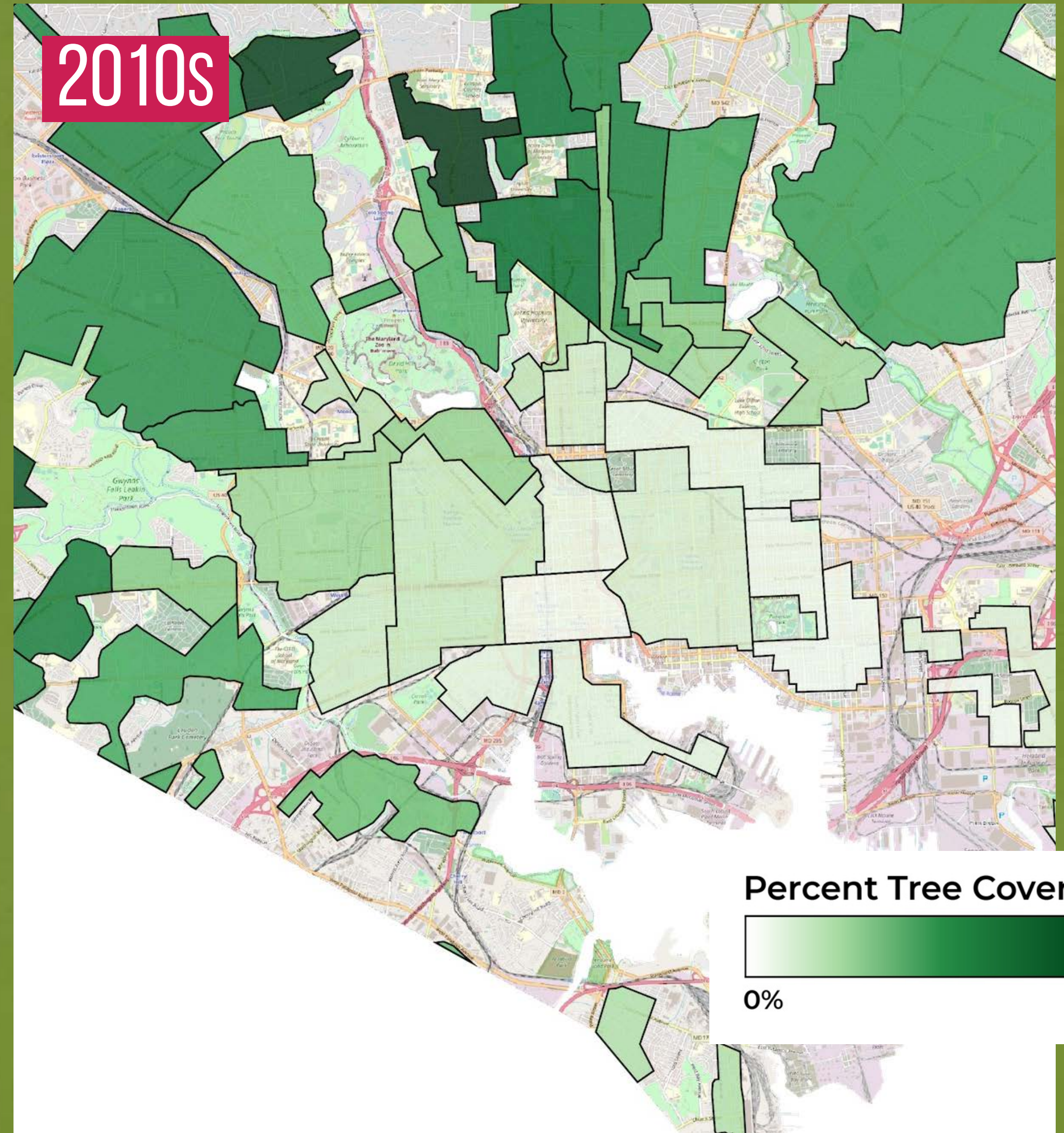
SOURCE: EPA EJ SCREEN

LASTING LEGACIES IN BALTIMORE, MD

1930s



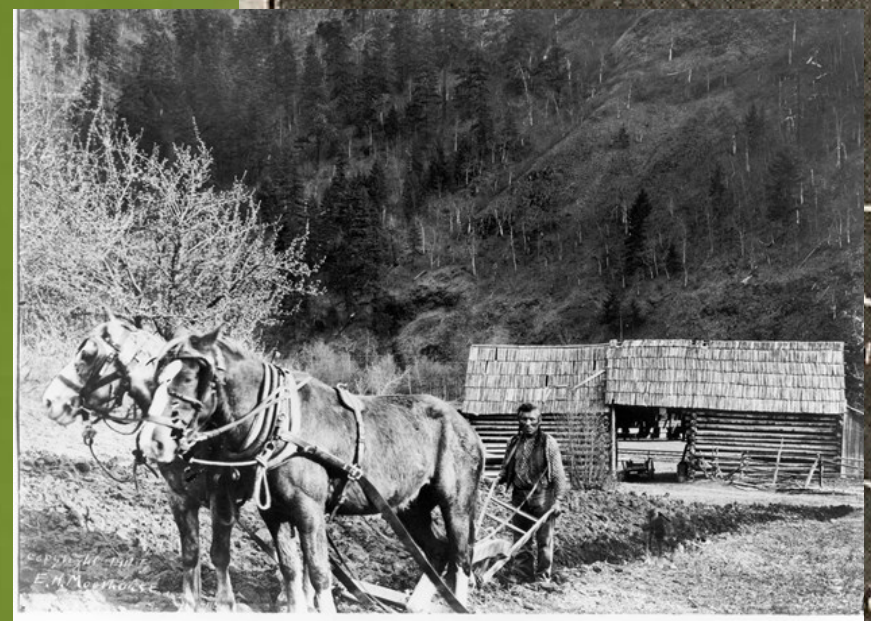
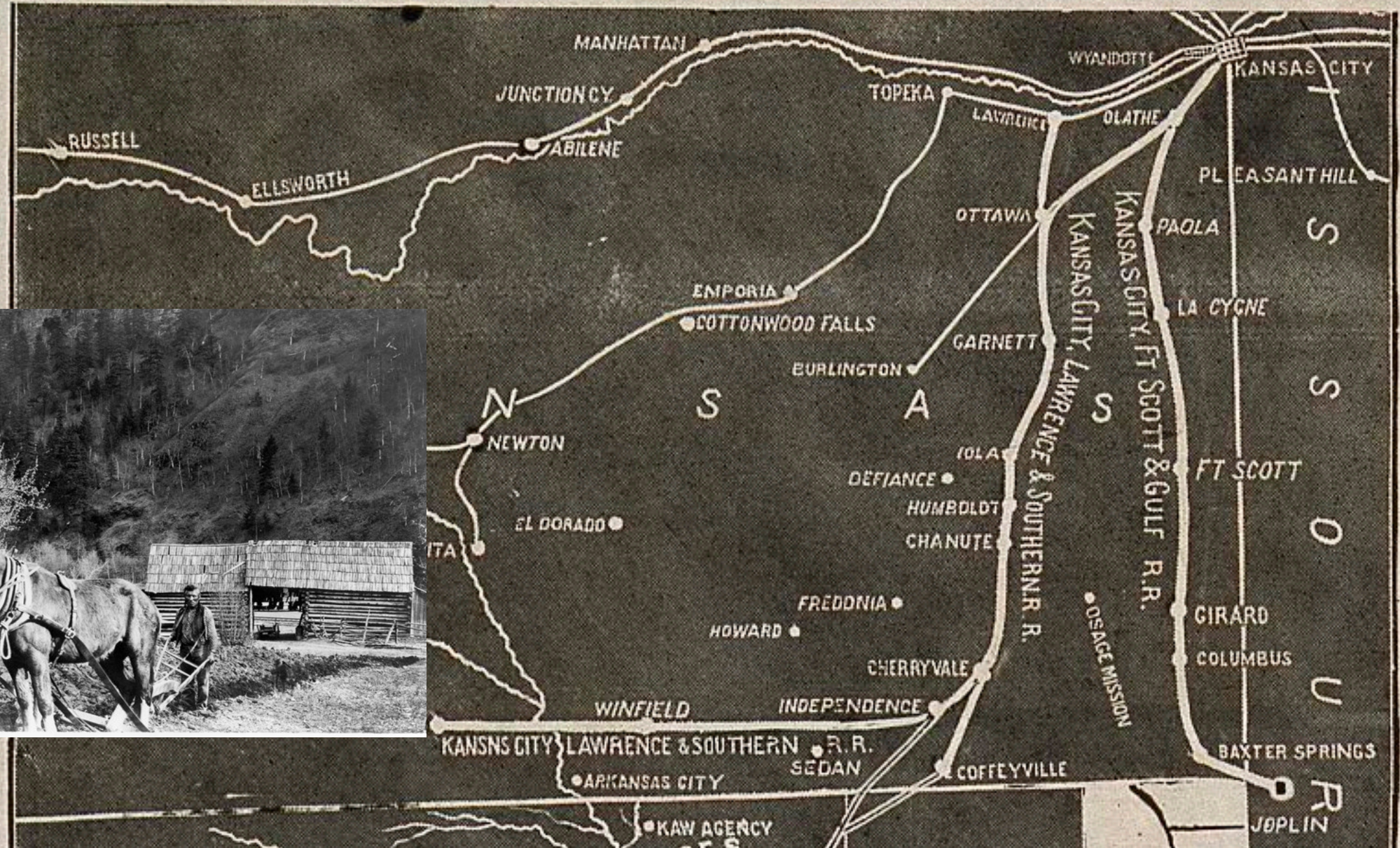
2010s



SOURCE: HOWARD CENTER FOR INVESTIGATIVE JOURNALISM

RACIALIZED HISTORY: LAND OWNERSHIP POLICIES

INDIAN TERRITORY HOMESTEAD ACT OF 1830 THAT GARDEN OF THE WORLD, OPEN FOR HOMESTEAD AND PRE-EMPTION



GI BILL



Police Arrest 4 As Crowd Hurls Rocks When Negro Veterans Move Into Chicago Housing Development

CHICAGO, Ill.—Swinging their nightsticks, 100 policemen battled an equal number of men and women at the Airport Homes, a Southside housing project, Monday afternoon after the crowd hurled rocks at a truck that had moved the furniture of Jean B. [Name obscured] to the project.

Police arrested four men and took them to the Chicago Law Center.

The project was the scene last week of several demonstrations and days of rioting. Daily, the press that the two Negro families would remain and "they will give the people a section of the new housing."

The truck attacked Monday was driven by Bernard Persily, member of UNAVA, and operator of a furniture store. It was leaving the project after unloading the furniture when the attack began. A police car following the truck crashed into it when the truck stopped suddenly as the shower of rocks began.

Explicit racism in local policy and lending practices excluded the majority of Black vets from benefiting from the bill.

WEST PHILADELPHIA LANDSCAPE PROJECT



WEST PHILADELPHIA LANDSCAPE PROJECT



SEGREGATION + HAZARDOUS ENVIRONMENTS

CLIMATE IMPACTS



AGING INFRASTRUCTURE



UNEQUAL DISTRIBUTION OF ENVIRONMENTAL AMENITIES



PREVENTING GREEN GENTRIFICATION



PREVENTING GREEN GENTRIFICATION

PROTECT THE STABILITY
AND DIVERSITY OF
NEIGHBORHOODS



PURSUE REMEDIES TO
DISPLACEMENT



PRESERVE AND FUND
AFFORDABLE HOUSING



PROVIDE EDUCATION
& INFORMATION TO
RESIDENTS



SEGREGATION: A GLOBAL EQUITY ISSUE

MADRID, SPAIN



LIMA, PERU



CAPE TOWN, SOUTH AFRICA



MODELS FOR URBAN DEVELOPMENT

REINVESTMENT & PARTNERSHIPS



Build collaborations and secure partnerships to support effective action

GRASSROOTS EFFORTS



Engage residents and foster community leadership

PLACE-BASED SOLUTIONS



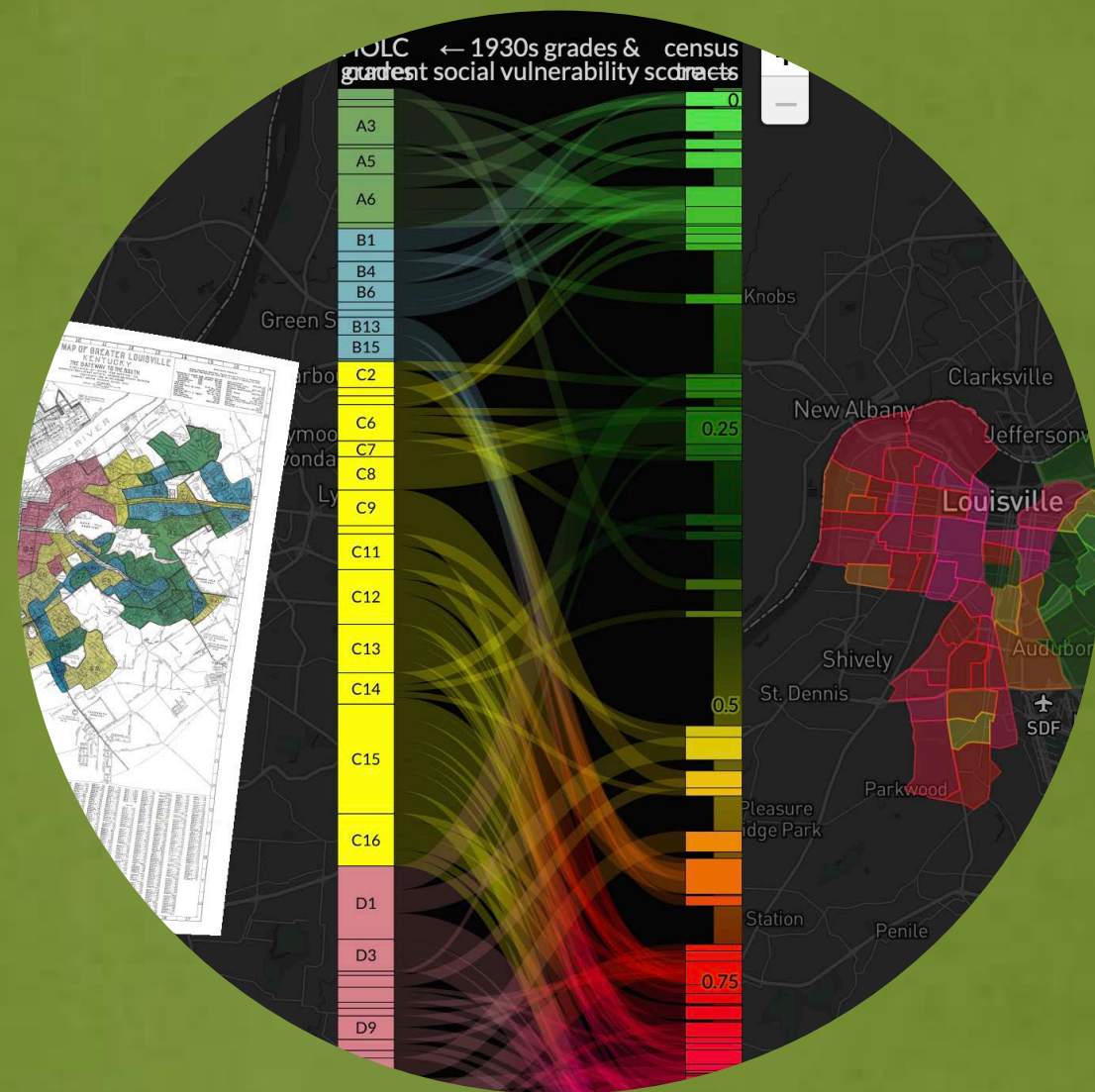
Plan for affordable housing and ensure neighborhood amenities

PHOTOS: CODMAN SQUARE NEIGHBORHOOD DEVELOPMENT CORP



WHAT CAN YOU DO?

Raise Your Awareness



Use Your Voice



Build Community

