

TREE ID PROGRAM FOR BEGINNERS



Julie Hart

Dutchess Land Conservancy



Michael Fargione

Cary Institute of Ecosystem Studies



Brian Straniti

Dutchess Land Conservancy

www.caryinstitute.org

Tree Identification for Beginners

March 23, 2022

Brian Straniti
Dutchess Land Conservancy

Julie Hart
Dutchess Land Conservancy

Mike Fargione
Cary Institute of Ecosystem Studies



Overview

- 1. Introduction to tree ID and why trees**
- 2. Learn how to use a simple ID key**
- 3. Identification of**
 - **Alternate branching deciduous trees**
 - **Evergreen trees**
 - **Opposite branching deciduous trees**
- 4. Q&A**



DUTCHESS LAND CONSERVANCY

Protected Land in Dutchess County and Surrounding Areas

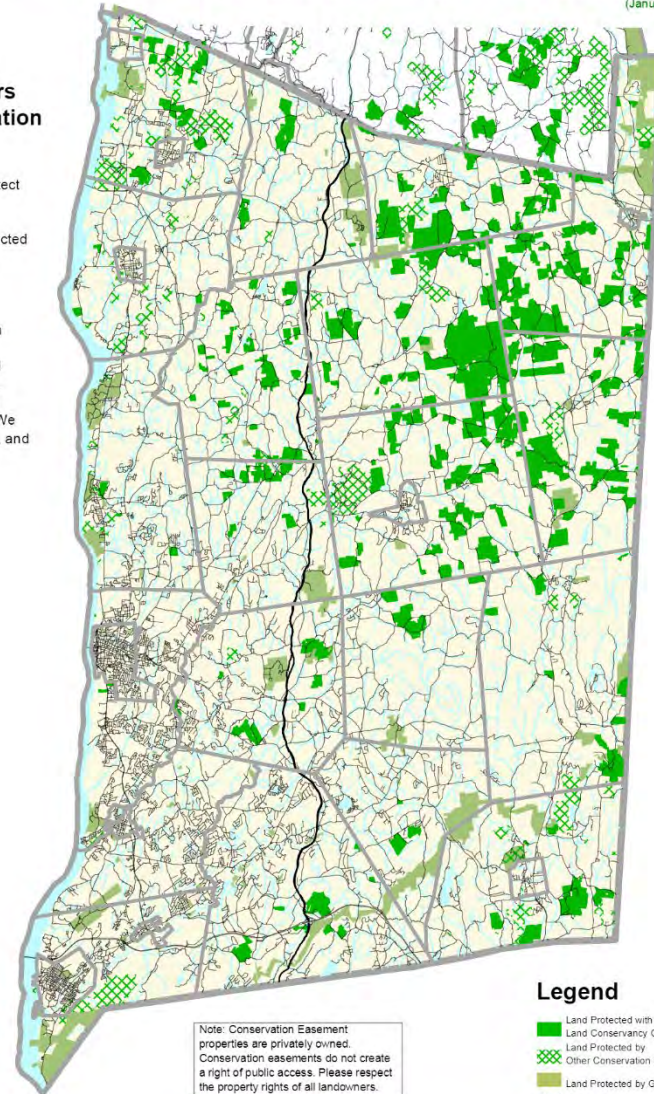
43,500 Acres Protected by Dutchess Land Conservancy

(January 1, 2020)

Voluntary Land Preservation By Private Landowners Through Conservation Easements

Conservation Easements protect valuable farmland and open space, while keeping land in private ownership. Land protected by conservation easements stays on the local tax rolls.

Since 1985, Dutchess Land Conservancy has worked with 416 private landowners to preserve 43,500 acres of land with conservation easements. Over half of our conservation easements are on farmland. We also protect forests, wetlands, and critical wildlife habitat.



Note: Conservation Easement properties are privately owned. Conservation easements do not create a right of public access. Please respect the property rights of all landowners.

Dutchess Land Conservancy

P.O. Box 138
Millbrook, NY 12545
(845) 677-3002
www.dutchessland.org

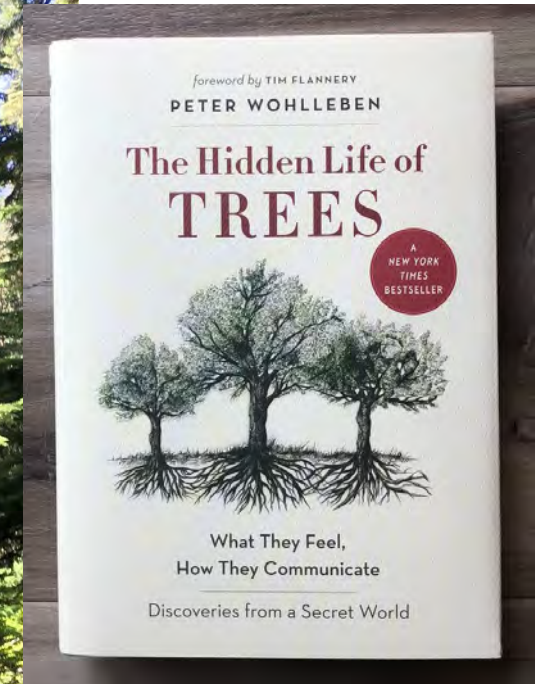


Legend

- Land Protected with Dutchess Land Conservancy Conservation Easements
- Land Protected by Other Conservation Organizations
- Land Protected by Government
- Roads
- Water Bodies
- Municipal Boundaries



Why Me?



Overview



Why Bother?

Trees Matter



Why Bother?

Trees Matter



Wildlife habitat



Forest products



Outdoor recreation

Why Bother?

Trees Work Hard



Why Bother?

Trees Work Hard

Generate and preserve soils



Produce oxygen and filter air



Filter and purify water

Erosion control

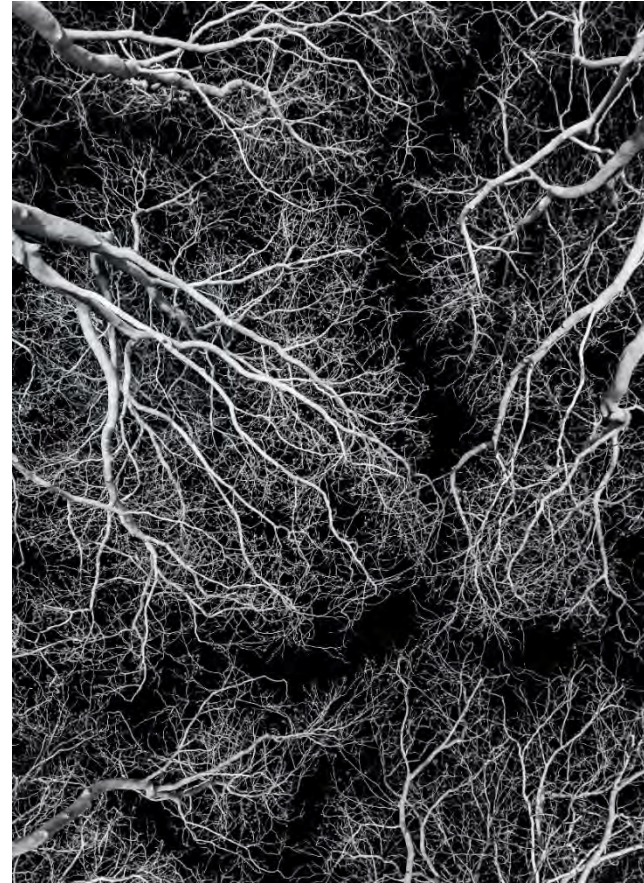
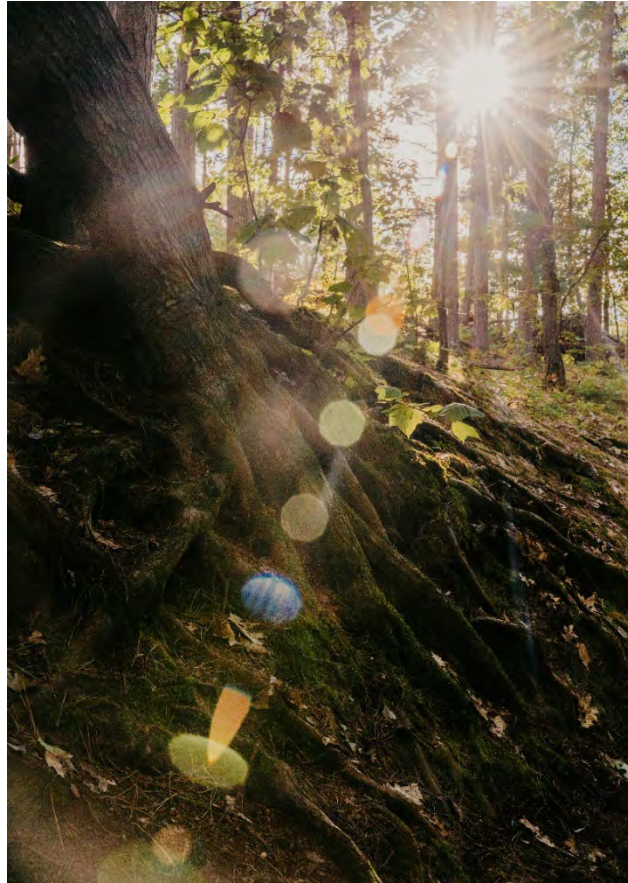


Can We Learn from Trees?

Trees Are Communal

Can We Learn from Trees?

Trees Are Communal



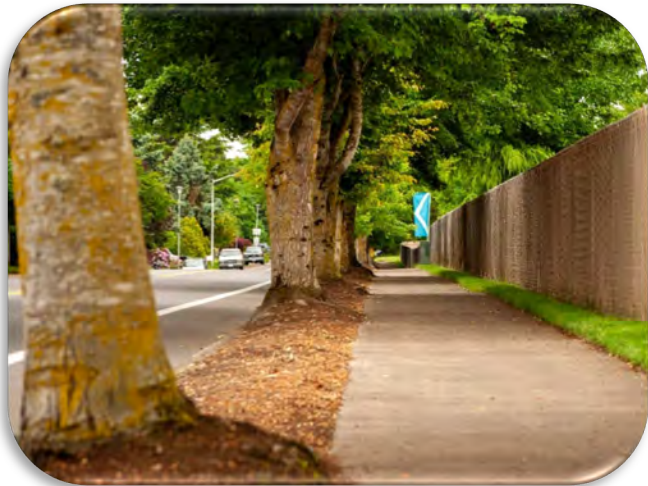
Why Bother?

Trees Are Cool!!



Why Bother?

Trees Are Cool!!



Shading and cooling



Endlessly interesting



Good neighbors

Meet The Neighbors



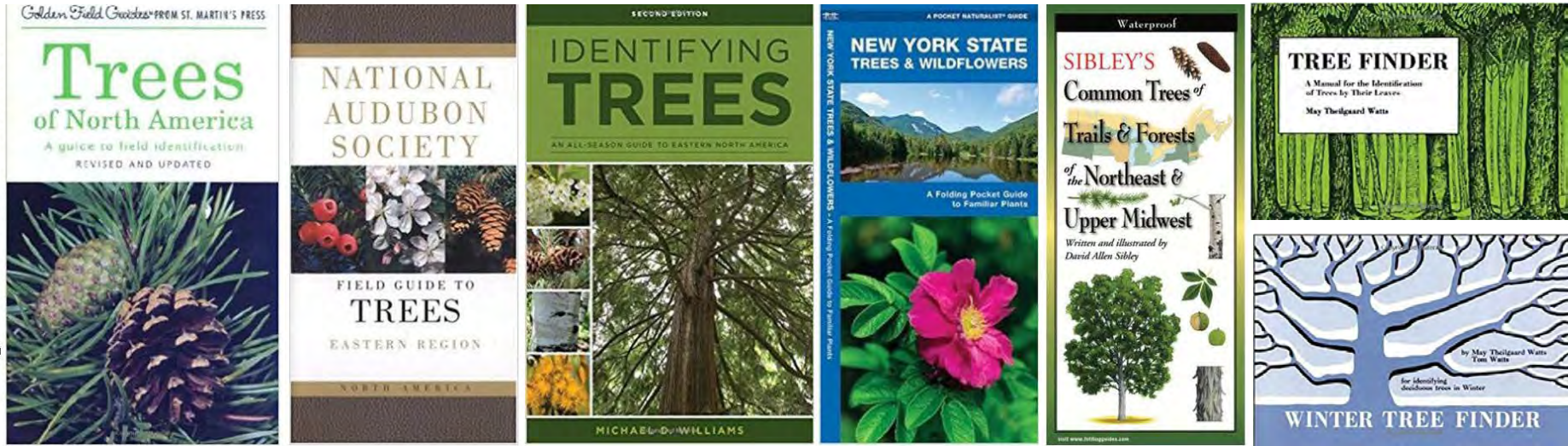
Meet The Neighbors

One at a time...

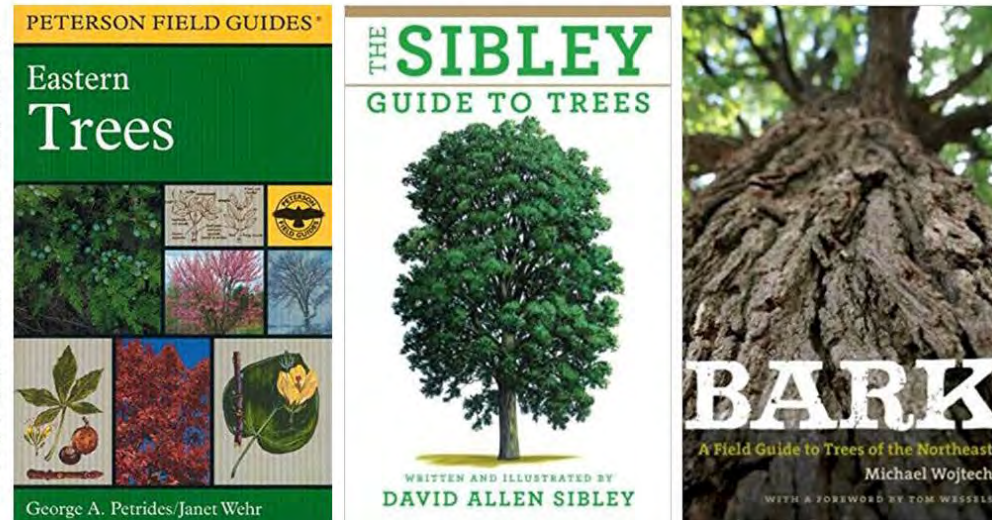


Field Guides

Beginner Tree Guides

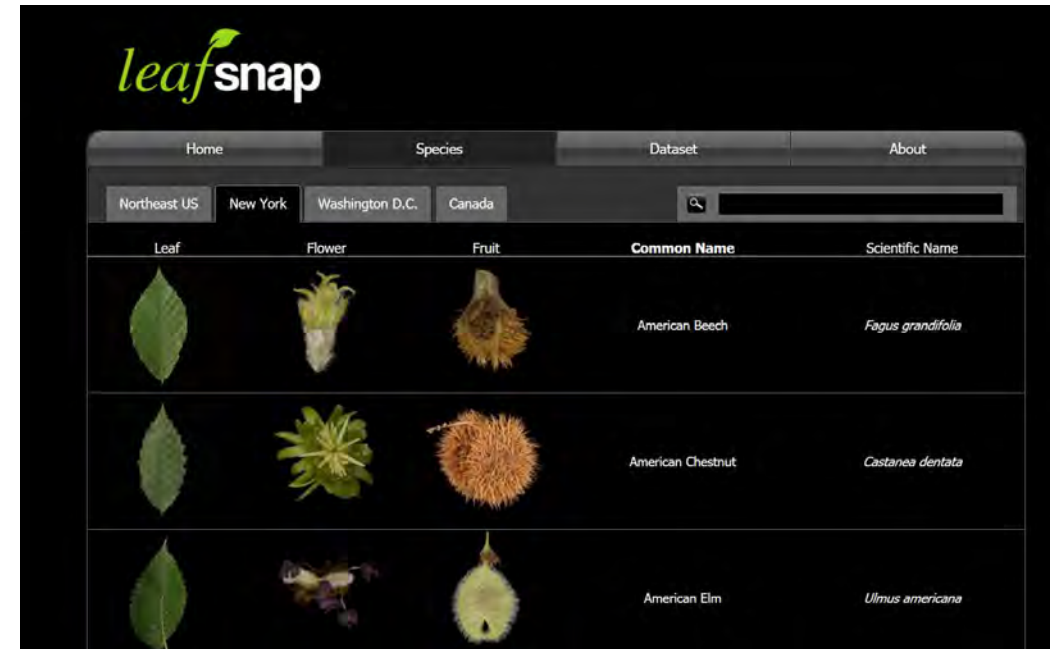
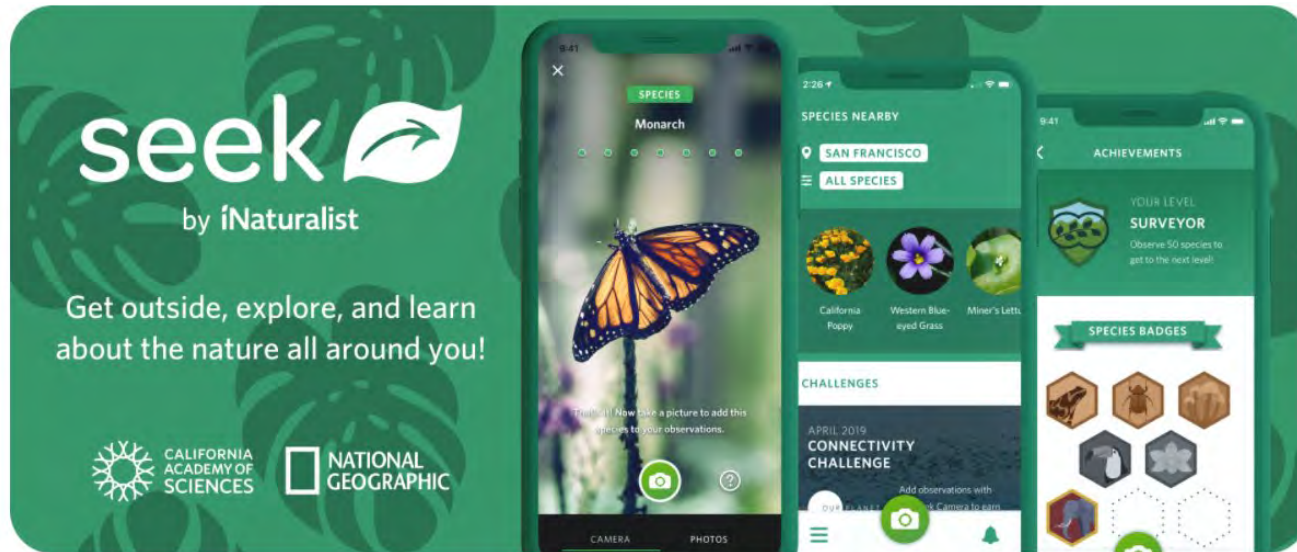


Advanced Tree Guides

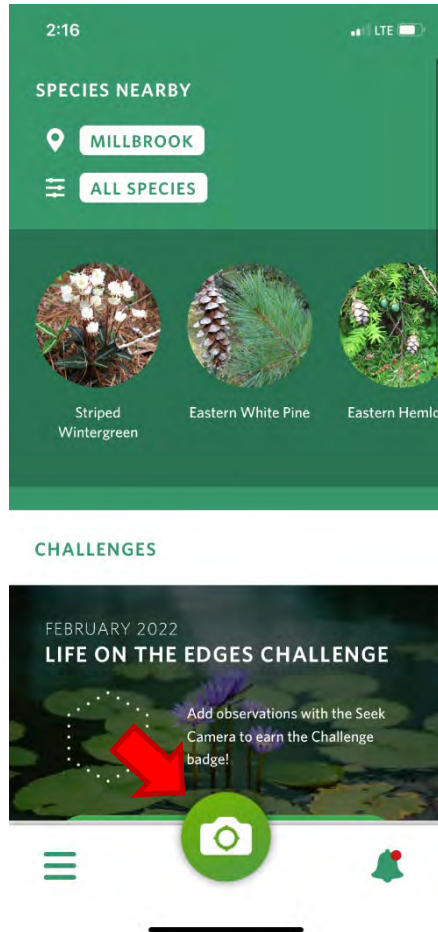


Field Guides

There's an app for that!



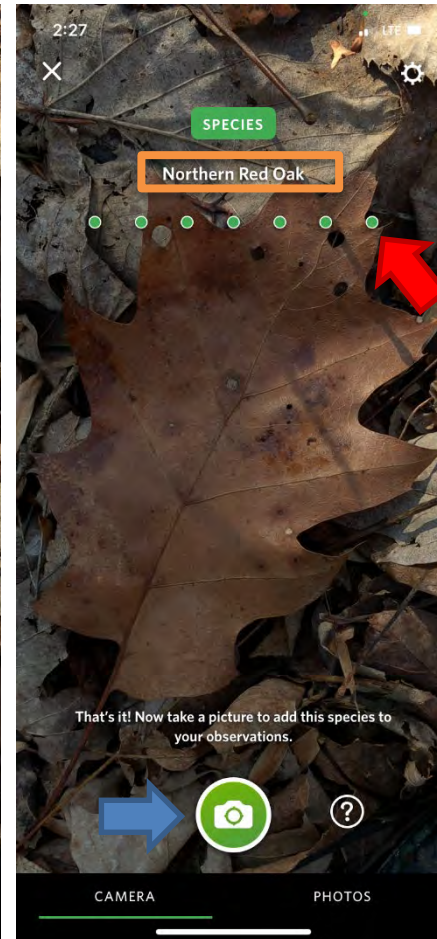
Field Guides - Seek



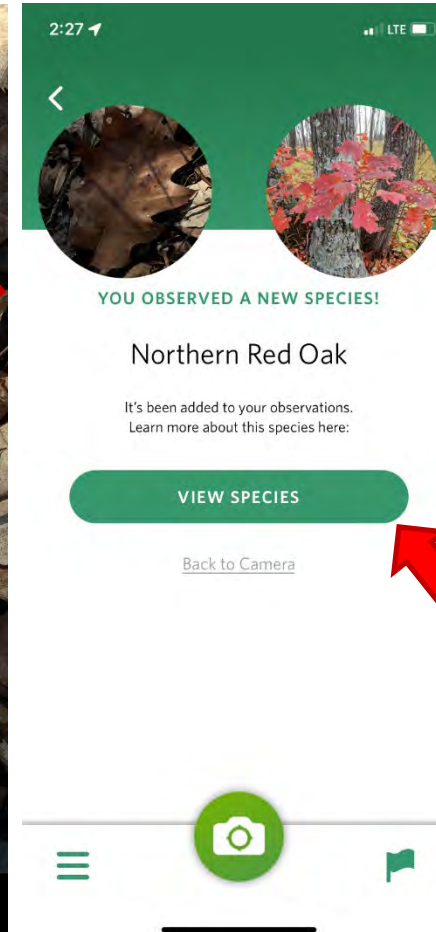
1.



2.



3.



4.

Why Bother?

Trees Are In Trouble



Why Bother?

Trees Are In Trouble



Chestnut blight



Dutch elm disease



Dogwood anthracnose



Butternut
canker

Why Bother?

Trees Are In Trouble



Hemlock woolly
adelgid



Asian long-
horned beetle

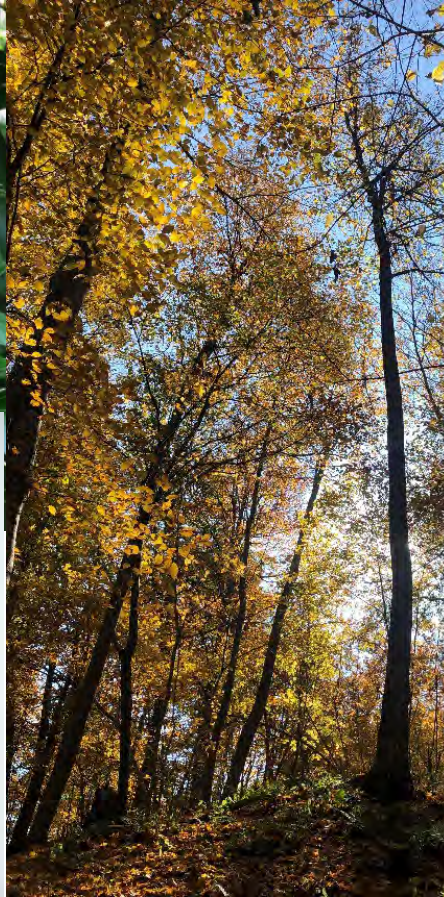
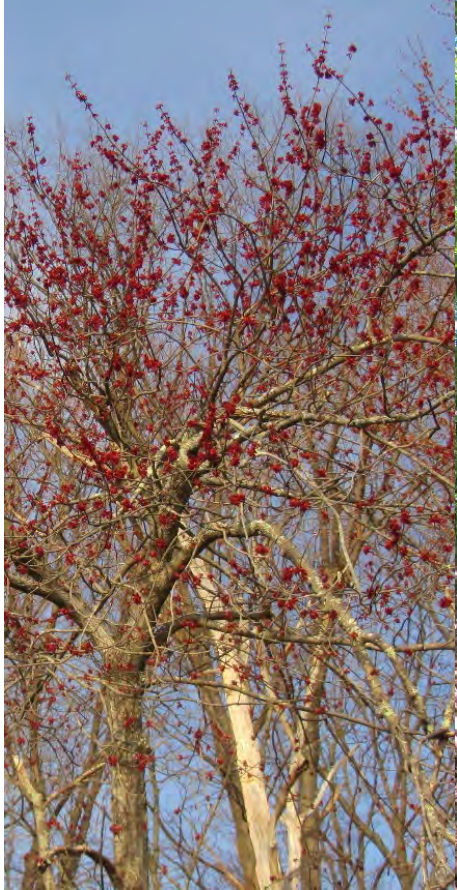


Beech bark
disease



Emerald ash
borer

Seasonal Variation



Distinctive Character



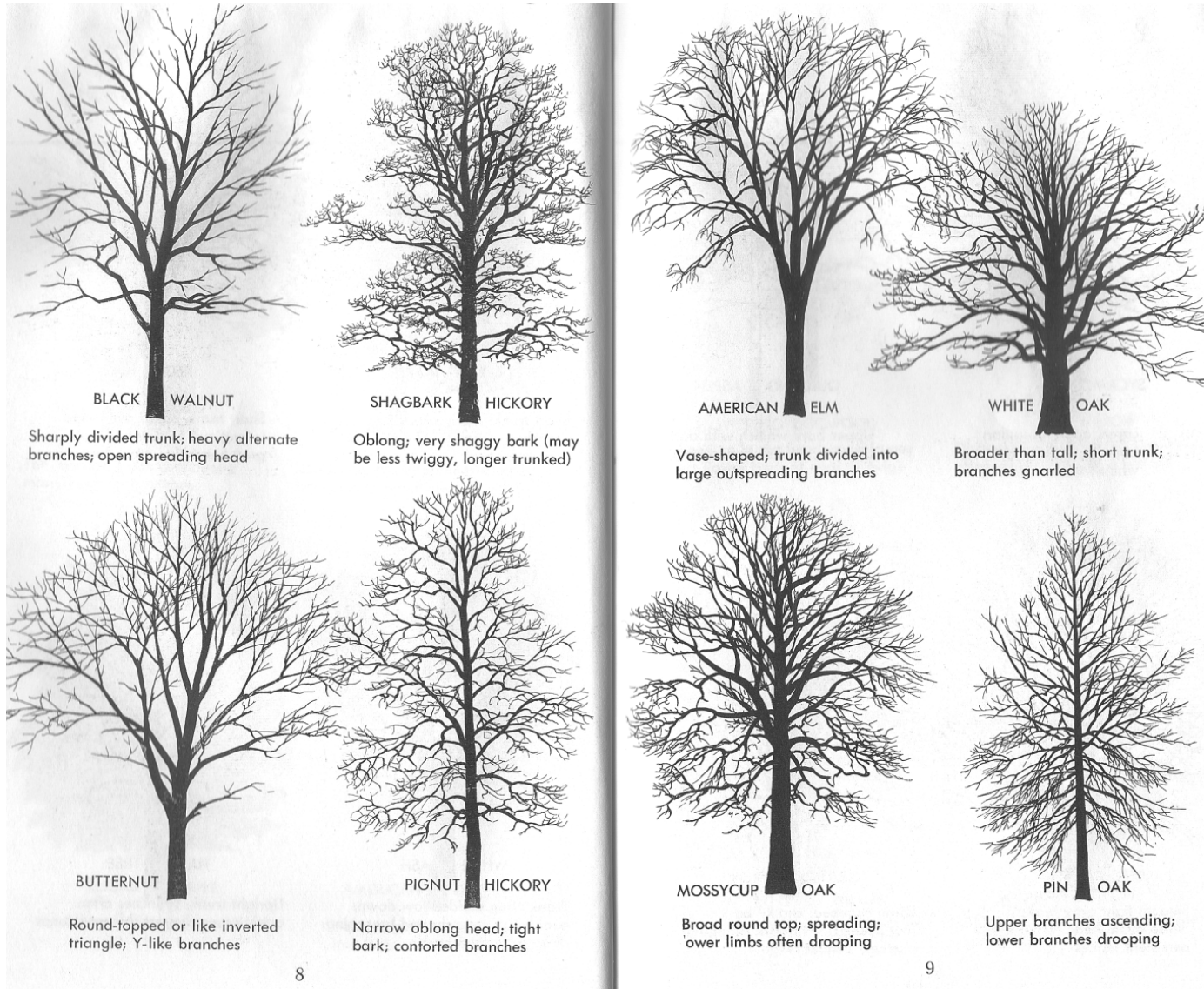
Distinctive Character



Distinctive Character



Distinctive Character



After Petrides, George
 A Field Guide to Trees
 and Shrubs. 2nd ed.,
 Houghton Mifflin Co.,
 Boston. 428pp. 1972.

Distinctive Character



Distinctive Character



Distinctive Character



Let's Go For A Walk In The Woods!

